

Poplars & Willows, Sustainable Livelihoods & Rural Development

International Poplar Commission
Side Event, FAO, Rome, Italy

Jim Carle,

IPC Executive Committee Member

25 June 2014

COFO 22
WORLD FOREST WEEK



www.fao.org/forestry

Part I

Global Facts & Figures for Poplars & Willows



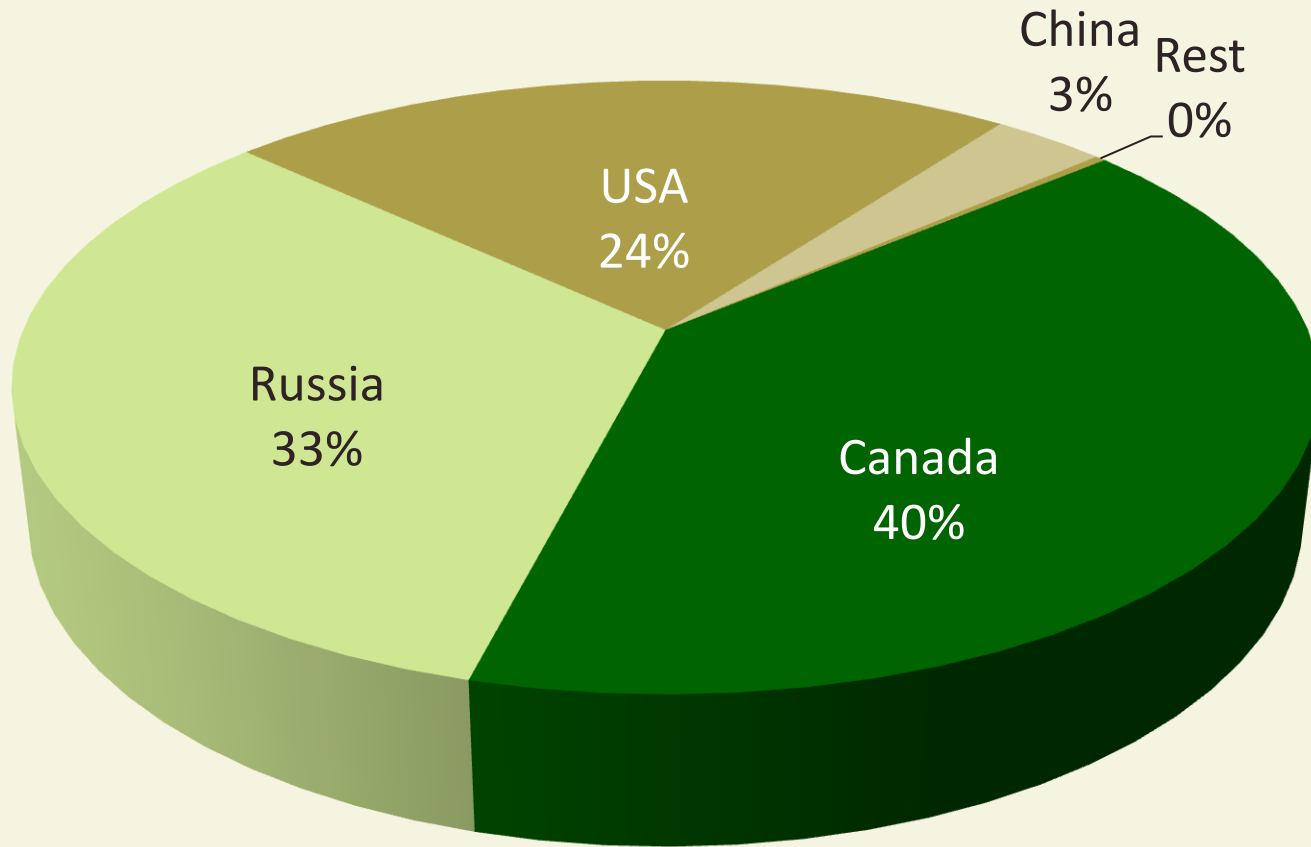
Poplar & Willow Areas 2008-2012

	World (m ha)	China (m ha)	China 2012 %
Natural Forest	82.3 (71.1)	2.5 (3.1)	3
Planted Forest	9.2 (5.4)	8.0 (4.3)	87
Agroforestry	3.4 (2.6)	2.8 (2.5)	82
Total	95.0 (79.0)	13.3 (9.9)	14

2012 data

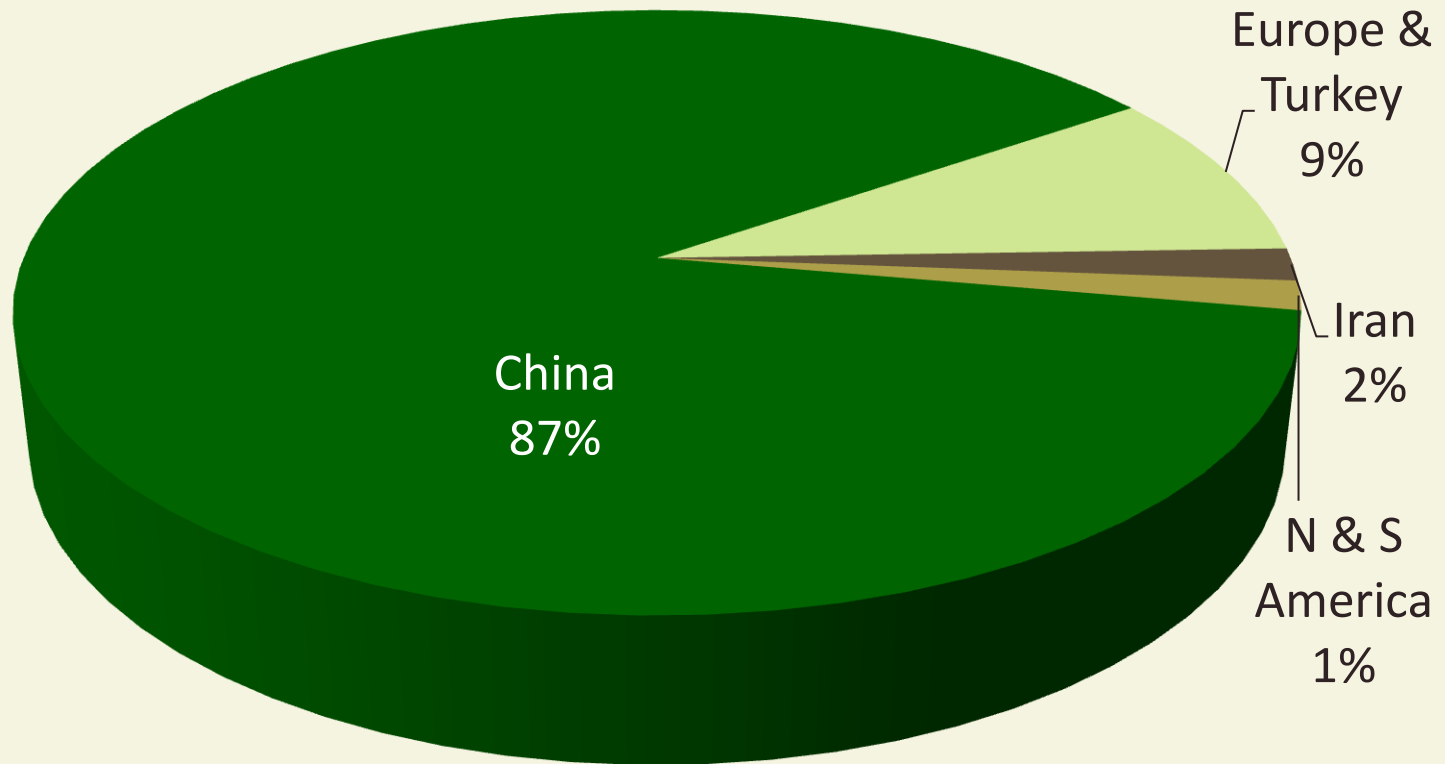
2008 data

Natural poplar area by country



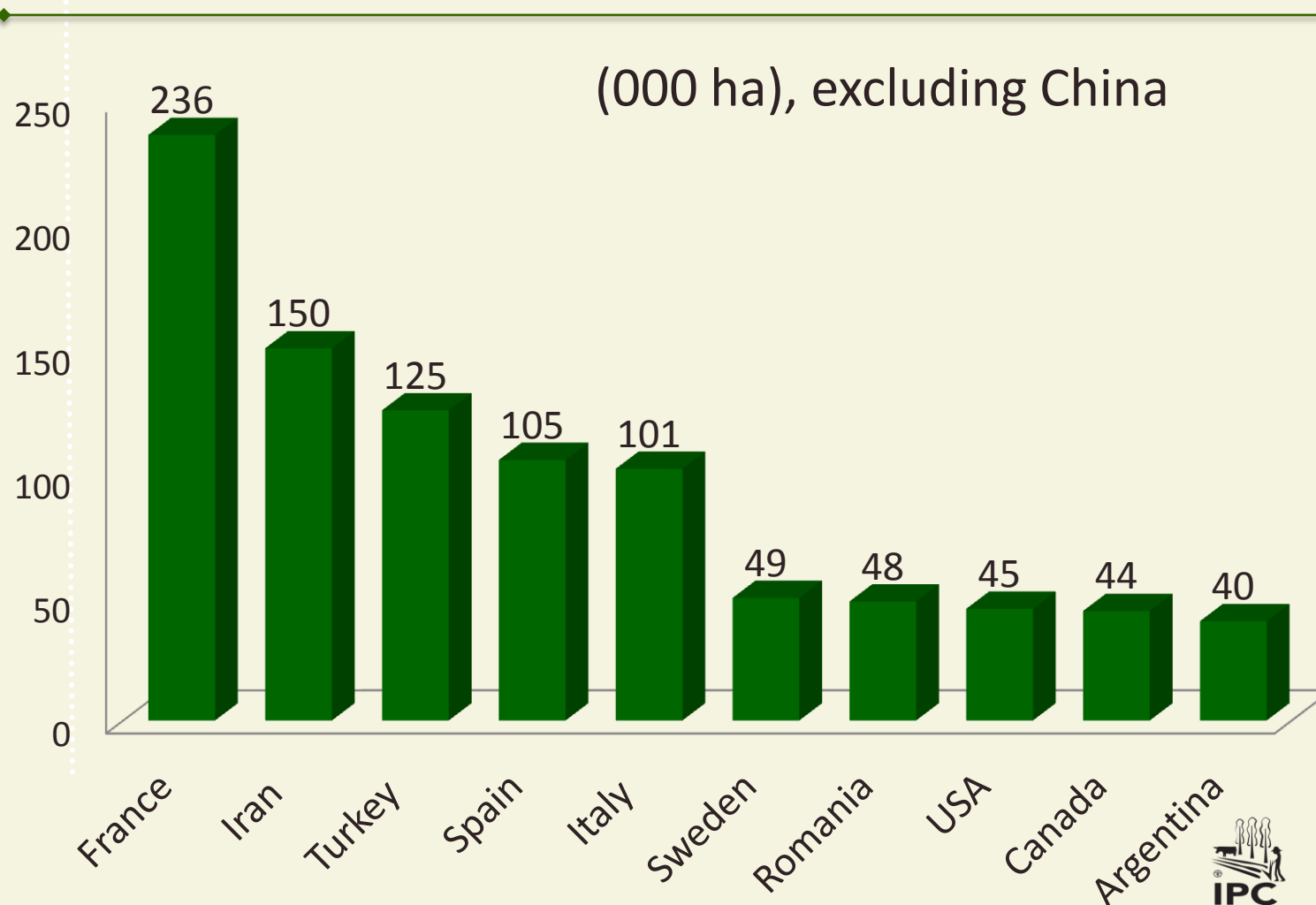
Total Area: 75 Million Ha

Planted poplar: area by region



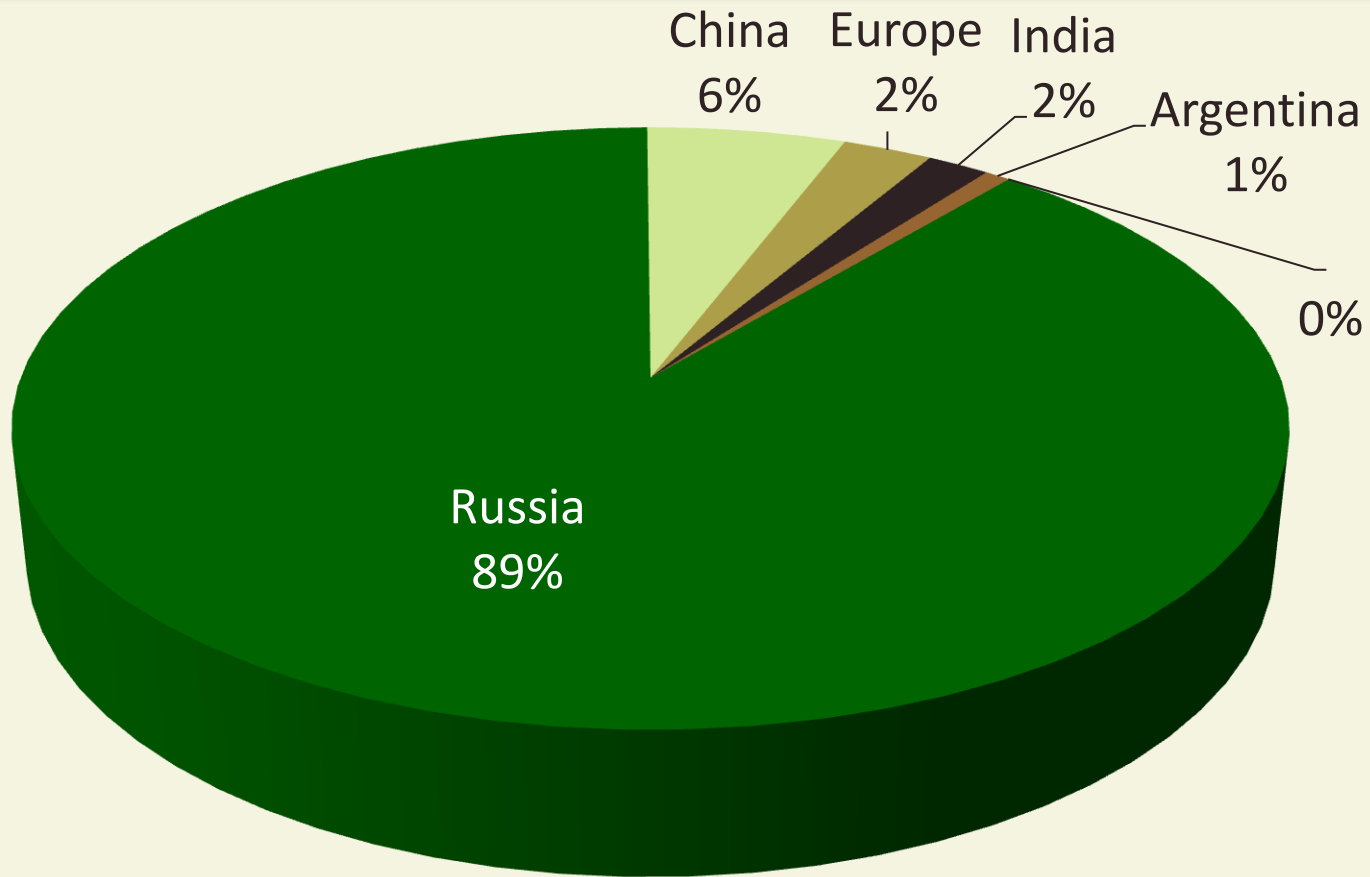
Total Area: 8.6 million ha
China: 8.0 million ha

Planted poplar: Top 10



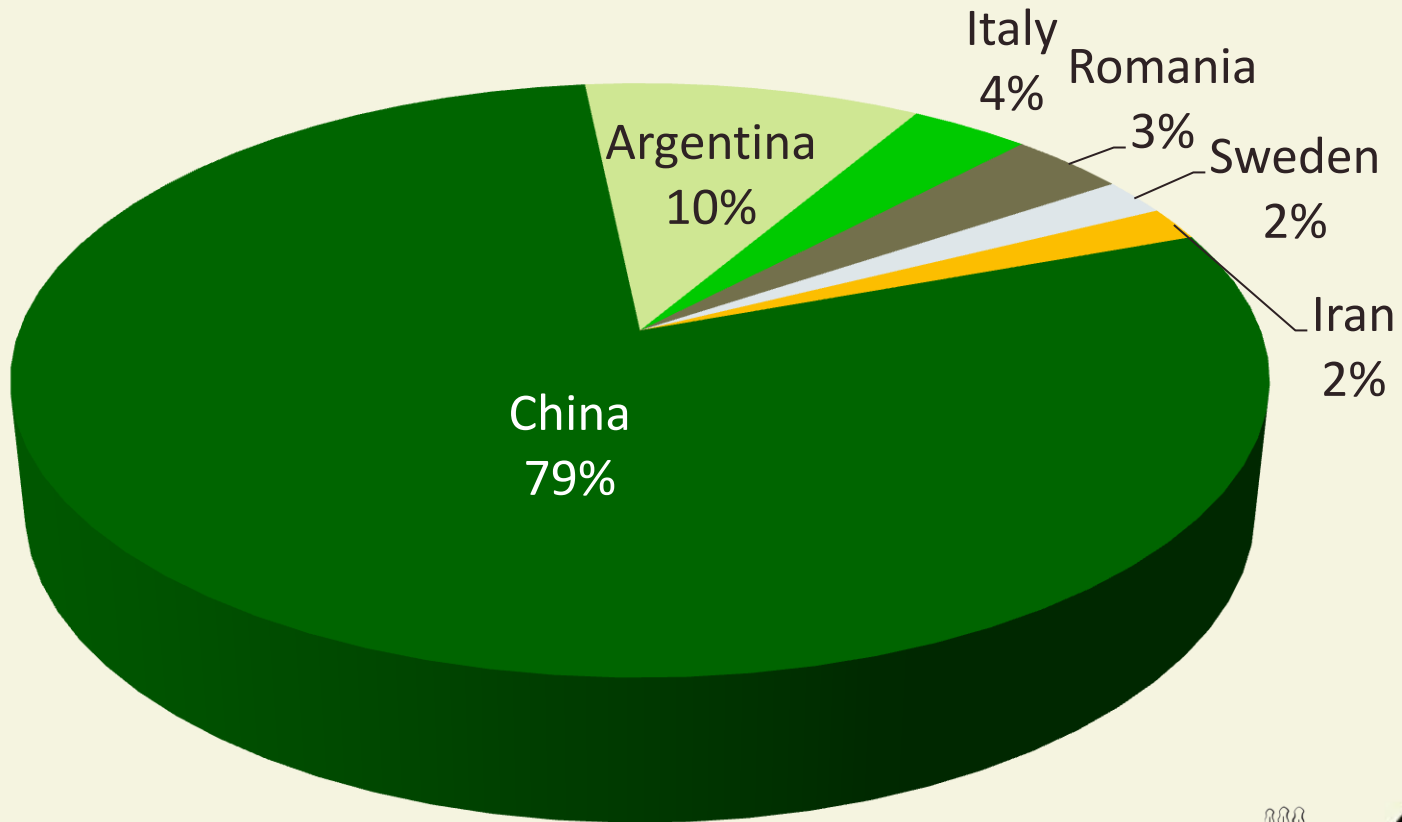
France and USA from 2008 report

Total Willow by region/country



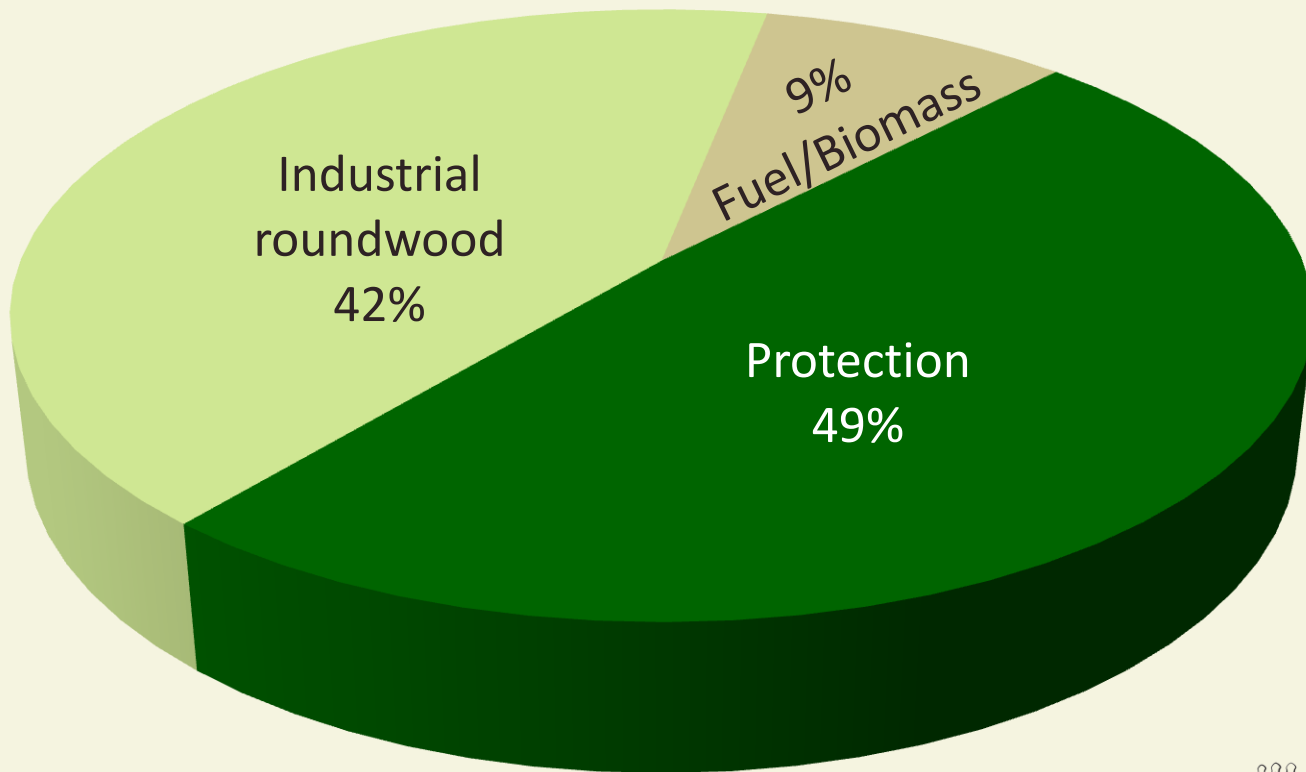
Total Area: 7.4 million ha

Planted willow: by country



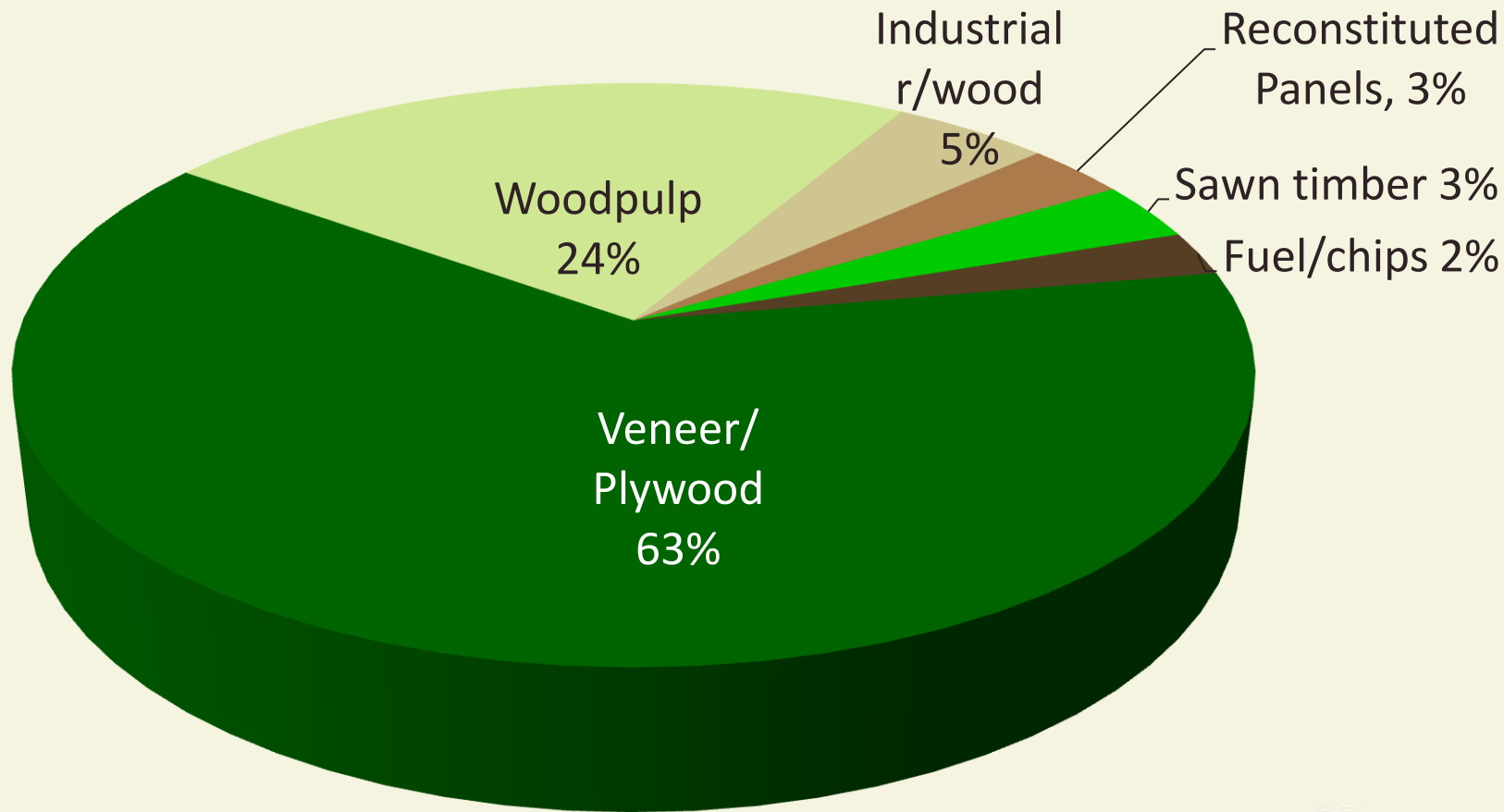
Total Area: 572,000 ha

Purpose: Poplar & Willow



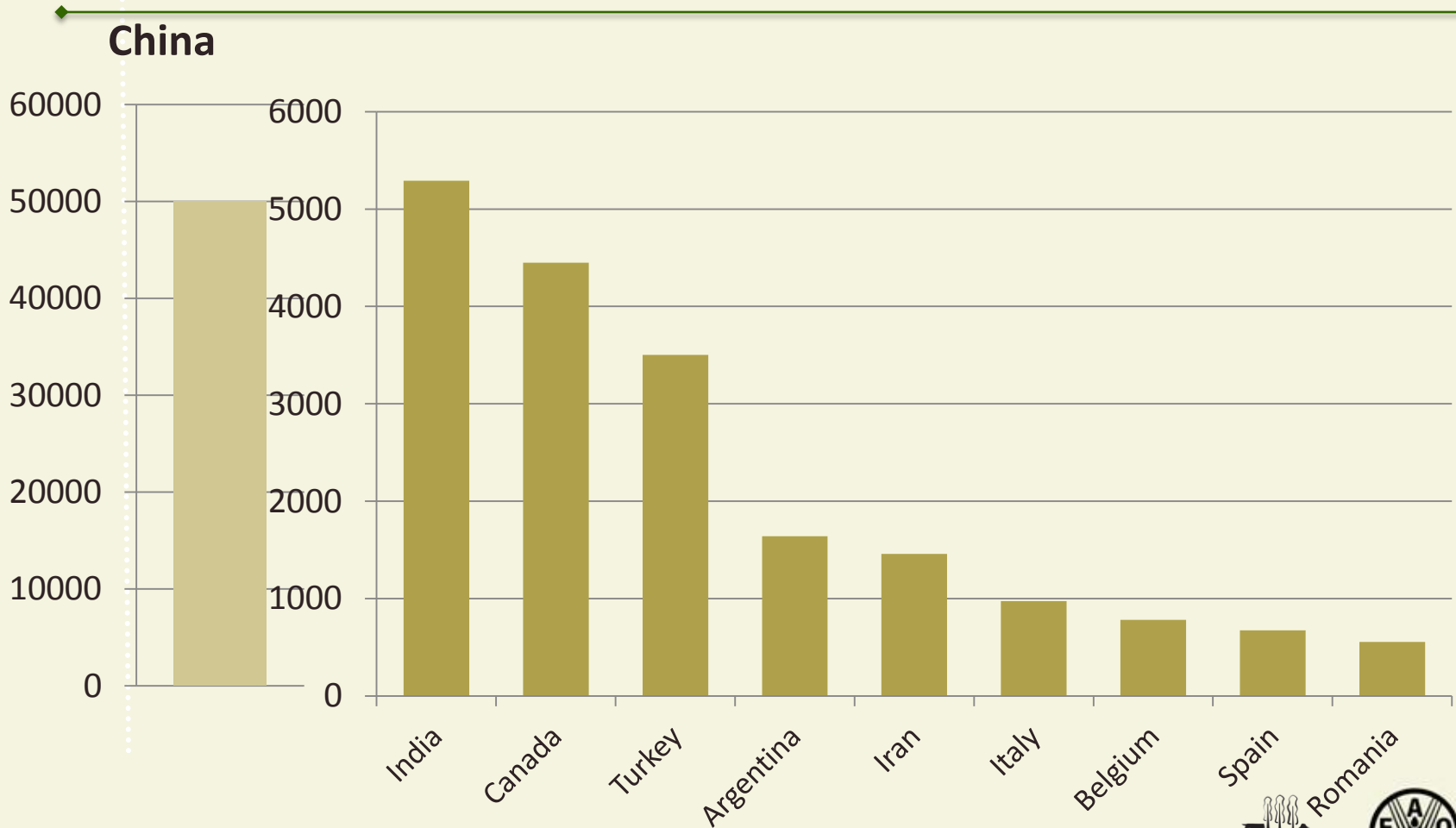
Based upon area

Poplar Wood Products



Total: 70.4 m3 million m3 (r/wood)

Poplar Wood Products: Top 10 countries



Total Production: 70.4 million m³ (r/wood)

Part II

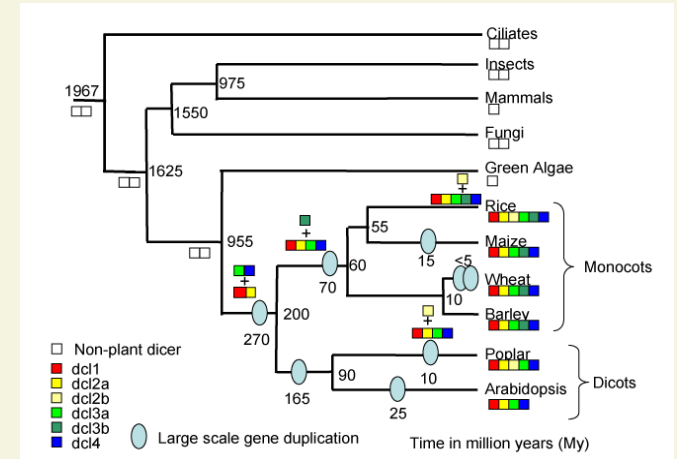
Salicaceae Model Family

- Tree Breeding
- Investment (growing, end-use)
- Environmental, Social & Economic Benefits
- Different Scale of Enterprises



Model for Tree Breeding

- Ease of Clonal propagation
- Ease of hybridization
- Pioneer of genetic mapping of DNA markers along chromosomes & DNA sequencing of each chromosome
- Pioneer of genetic improvement



Model for Investment

- No need for major nursery infrastructure
- Fast growing, high productivity, short rotation
- Resilient to different soil & site conditions
- Integration with agriculture & other land-uses
- Response to silviculture (density, prune, thin)
- Straight, long clean bole, small crown
- Odourless, tasteless, colourless, few defects
- Extensive range of wood, fibre, fuel & NWFPs
- Extensive range of ecosystem services

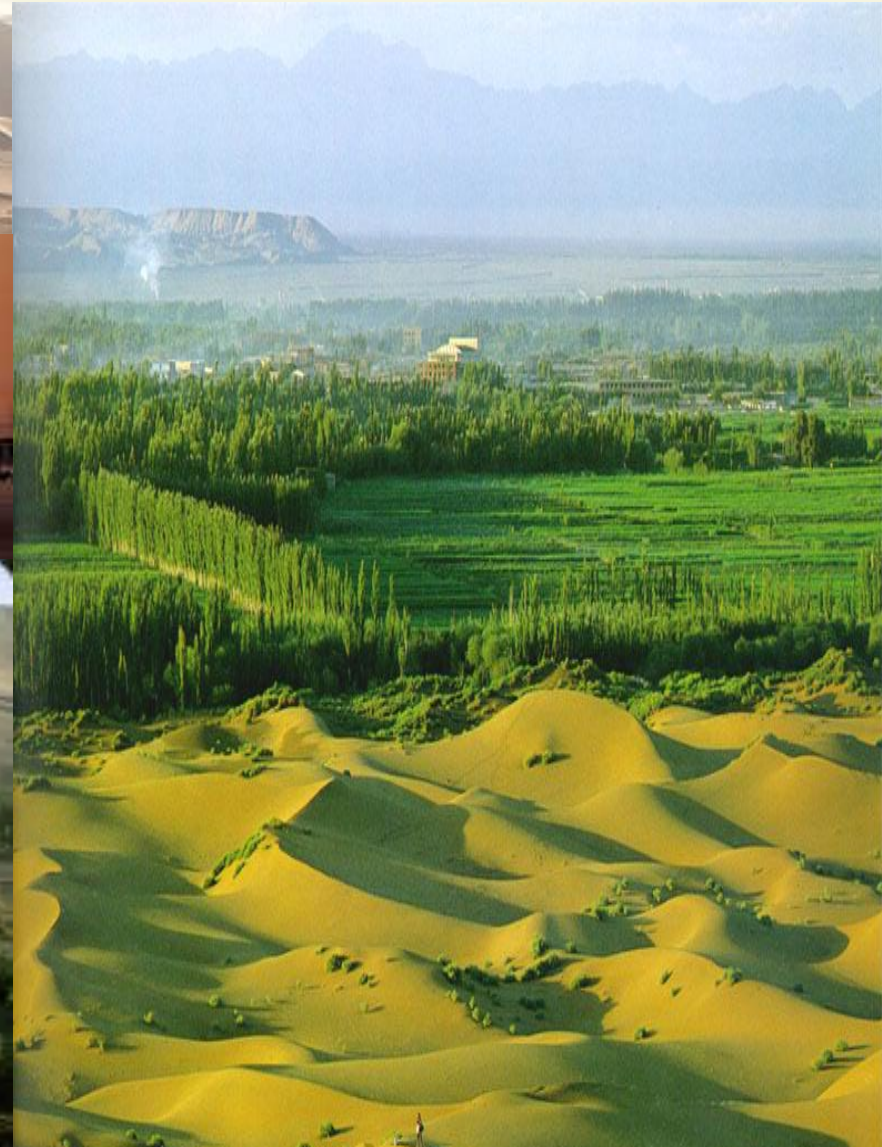
Environmental, Social & Economic Benefits



Combating Desertification



Fixing Sand Dunes



Shelterbelts in Arid & Montane Lands



Erosion & Landscape Restoration,



Phytoremediation



Livestock Fodder



Agroforestry: Animals



Agroforestry: Trees & Cash Crops



Agroforestry: Cash Crops



Urban Amenity



Aquaculture



Biodiversity





Varying Scales of Investment in Poplar & Willow Industries

Village Based Wood Industries



Village Based Industries: Poplar



Village Based Industries: Willow



Small Private Industries: Poplar



Corporate Industries: Poplar Plywood



Corporate Industries: Willow Bio-energy



IPC Website: <http://www.fao.org/forestry/ipc/en/>

Thank you



COFO 22
WORLD FOREST WEEK



www.fao.org/forestry